

# Wensum View Play Area

Quote No: 3800255 Dwn JG 17/11/15 @ A1  
 Flat to scale. 3D is an artists impression  
 for illustrative purposes only.



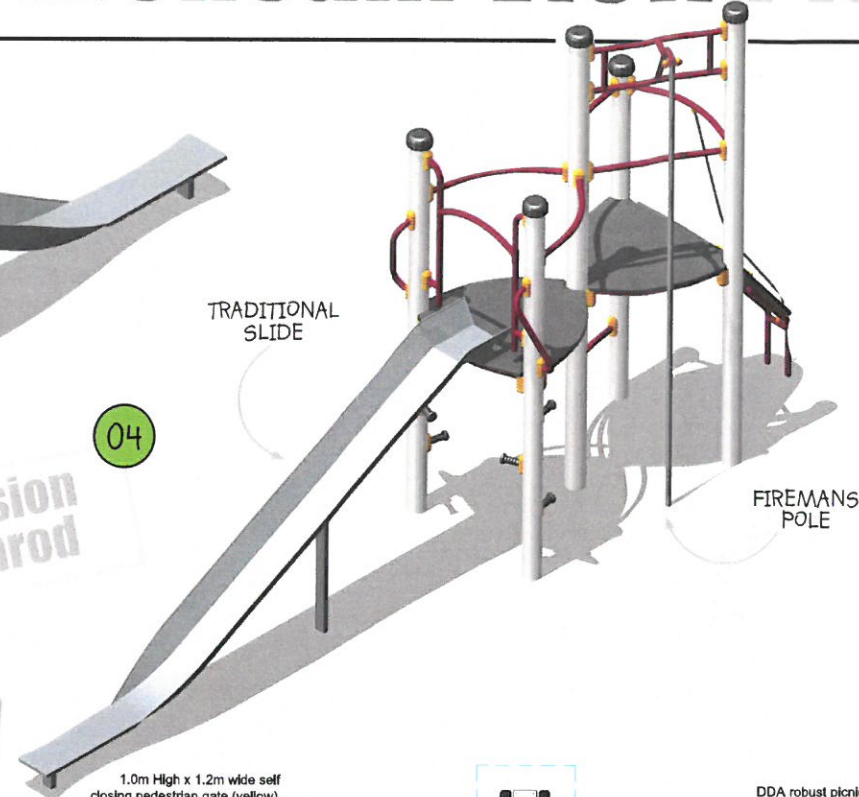
Double Tower Toddler Unit



Mission Nimrod

TRADITIONAL SLIDE

04



FIREMAN'S POLE

SLIDING MAZE

BINOCULAR LOOK OUT STATION

ARCH BRIDGE



SCRAMBLE NET

IMAGINATIVE PLAY WINDOWS

PULL UP RAMP

0.6M HIGH SLIDE

01

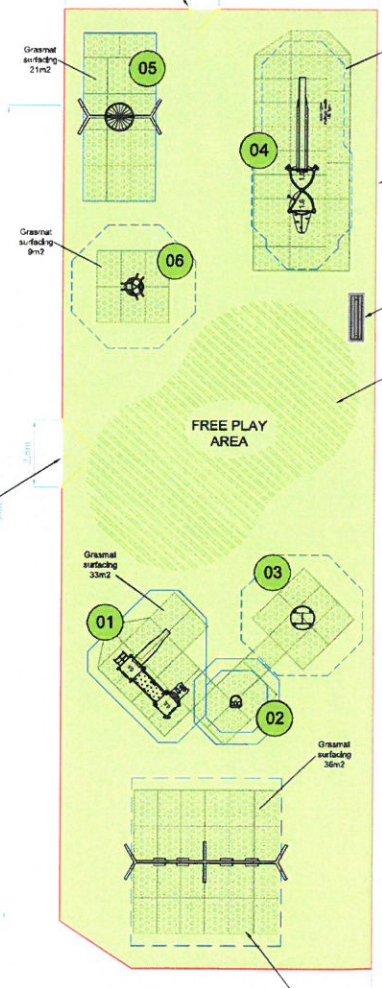


Inclusive Group Swing

05



Plan View  
NOT TO SCALE



1.0m High x 1.2m wide self closing pedestrian gate (yellow).

DDA robust picnic table has been positioned outside of the play space. Final position to be agreed at time of installation. (Supplied by GYB Norse).

New 1.0m high bow top fencing galvanised & powder coated 100.5 L/m

Relocated and refurbished park seat.

Open space left for future equipment to be installed or left as free space for children to run and circulate.

Equipment List		
No.	Code	Description
01	MZW630	Double Tower Toddler unit
02	SSB300	Inclusive DDA Springie
03	SWD160	Back To Back Roundabout
04	CZW027	'Nimrod' Mission Unit
05	SNS080	Large Basket Swing
06	TZA036BK	Low Rotator

MIRROR PANEL

LADDER STEPS

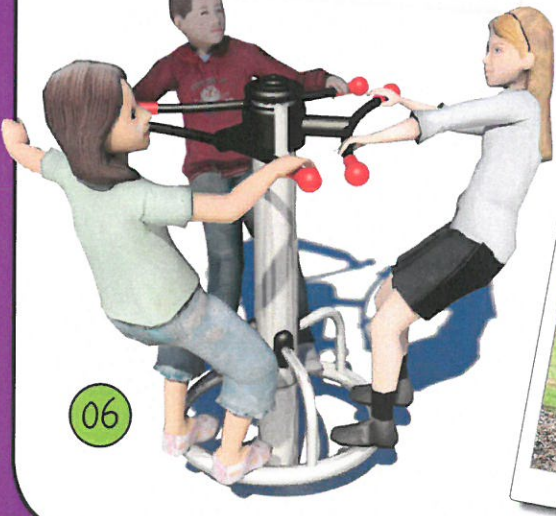


Inclusive Springie

02



Low Rotator



06



Back to Back Roundabout



03



Units chosen have ensured that the clients essential activities and desirable activities have been complied with in full.

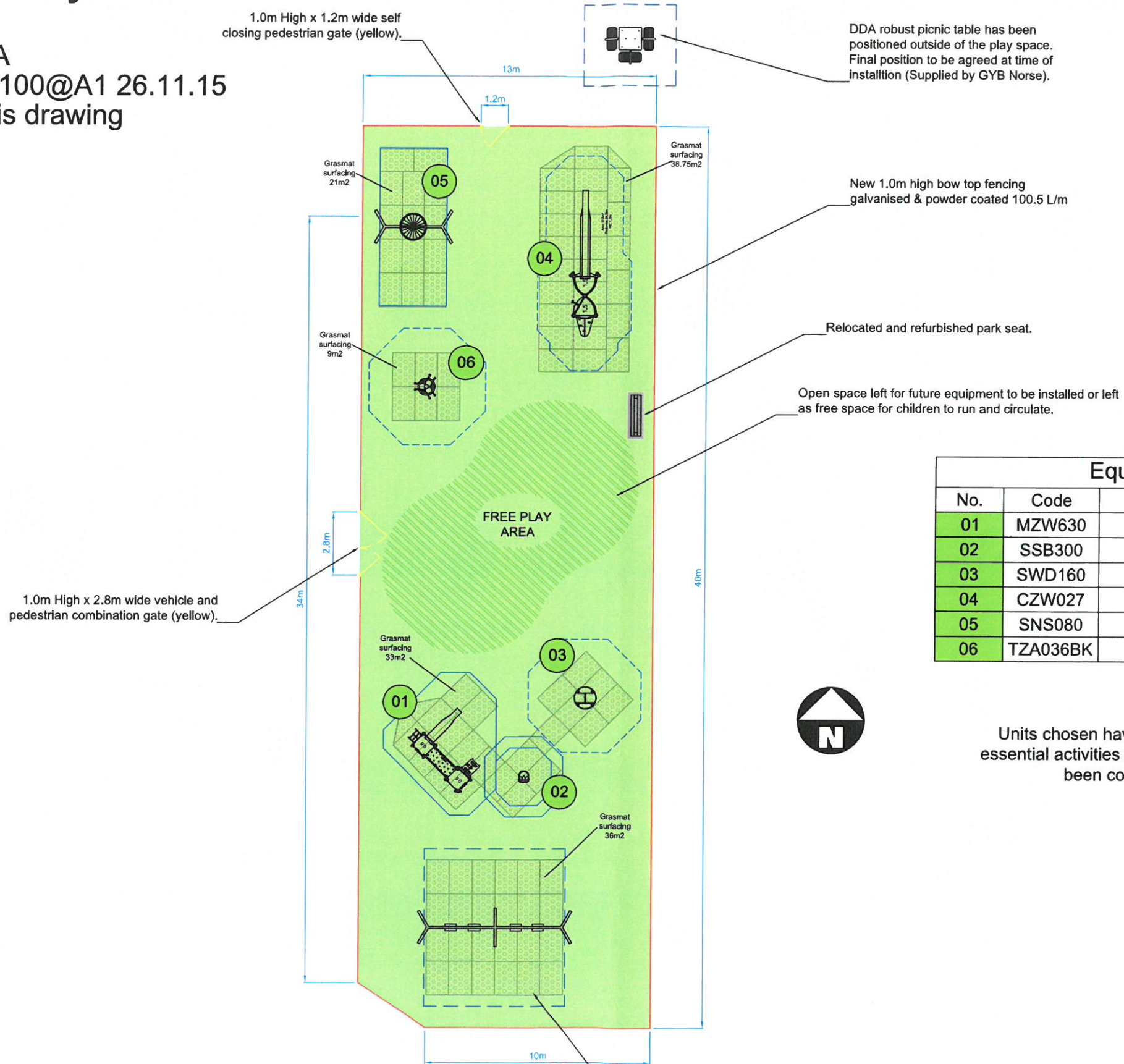
Existing swing frame to be retained. Keep the two flat & two cradle seat combination. Break out and dispose of the old concrete base, reinstated with soil and lay new turf to area.

# Wensum View Play Area GYB Norse

Quote No. 3800255A

Dwn PF/JG Scale 1:100@A1 26.11.15

Do not scale from this drawing



Equipment List		
No.	Code	Description
01	MZW630	Double Tower Toddler unit
02	SSB300	Inclusive DDA Springie
03	SWD160	Back To Back Roundabout
04	CZW027	'Nimrod' Mission Unit
05	SNS080	Large Basket Swing
06	TZA036BK	Low Rotator



Units chosen have ensured that the clients essential activities and desirable activities have been complied with in full.

