

GARDEN WASTE RECYCLING CALENDAR 2015-16



grass cuttings



leaves and shrubs



hedge clippings



cut flowers



twigs and small branches



Welcome to
Norwich City
Council's
fortnightly
garden waste
scheme.

GARDEN WASTE RECYCLING CALENDAR 2015-16

Please refer to your accompanying letter to find out which is your collection day.
This calendar does not relate to your household waste and recycling collections.

MONDAY

APRIL 15			MAY 15			JUN 15			JUL 15			AUG 15								
	07*	20		05*	18	01	15	29		13	27		10	24						
SEP 15			OCT 15			NOV 15			DEC 15			JAN 16			FEB 16			MAR 16		
	07	21		05	19	02	16	30			14		11	25		08	22		07	21

TUESDAY

APRIL 15			MAY 15			JUN 15			JUL 15			AUG 15								
	08*	21		06*	19	02	16	30		14	28		11	25						
SEP 15			OCT 15			NOV 15			DEC 15			JAN 16			FEB 16			MAR 16		
	08	22		06	20		03	17		01	15		12	26		09	23		08	22

WEDNESDAY

APRIL 15			MAY 15			JUN 15			JUL 15			AUG 15								
	09*	22		07*	20		03	17	01	15	29		12	26						
SEP 15			OCT 15			NOV 15			DEC 15			JAN 16			FEB 16			MAR 16		
	09	23		07	21		04	18		02	16		13	27		10	24		09	23

THURSDAY

APRIL 15			MAY 15			JUN 15			JUL 15			AUG 15								
	10*	23		08*	21		04	18	02	16	30		13	27						
SEP 15			OCT 15			NOV 15			DEC 15			JAN 16			FEB 16			MAR 16		
	10	24		08	22		05	19		03	17		14	28		11	25		10	24

FRIDAY

APRIL 15			MAY 15			JUN 15			JUL 15			AUG 15								
	11*	24		09*	22		05	19	03	17	31		14	28						
SEP 15			OCT 15			NOV 15			DEC 15			JAN 16			FEB 16			MAR 16		
	11	25		09	23		06	20		04	18		15	29		12	26		11	26*

NO CHRISTMAS AND NEW YEAR COLLECTIONS

There will be no collections for the two weeks between
Monday 21 December 2015 and Friday 1 January 2016.



NORWICH
City Council

***BANK HOLIDAYS**

(collection day highlighted in pink) –
bin will be collected later than normal.



HOW OUR SERVICE WORKS

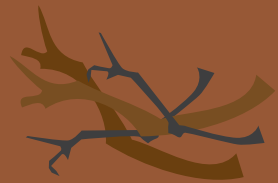


Garden waste placed in your brown bin should be loose not bagged.


Please ensure your bin lid is closed. We cannot accept extra waste left next to your bin.

Place your bin at the kerbside in front of your property by 7am on your collection day – but not before 6pm the night before. Please return your bin back to your property by 9am the day after it has been emptied.

Please report any missed bin collections within 48 hours. Any reported after this time will be picked on your next collection date.



Our contact details

For more detailed information including terms and conditions, calendars, and paying your invoice online visit www.norwich.gov.uk/wasteandrecycling or follow @NorwichCC at 

You can also contact us by emailing info@norwich.gov.uk or call **0344 980 3333**.

If you would like this information in another language or format such as large print, CD or audio cassette or Braille please call **0344 980 3333** or email info@norwich.gov.uk

