

DMP Proposals Map- Thorpe Hamlet Ward GROUP TWO

General

- Plan Boundary
- Inset Plan Boundary

- Sites for Gypsies & travellers/Travelling Showpeople (Policy DM14)

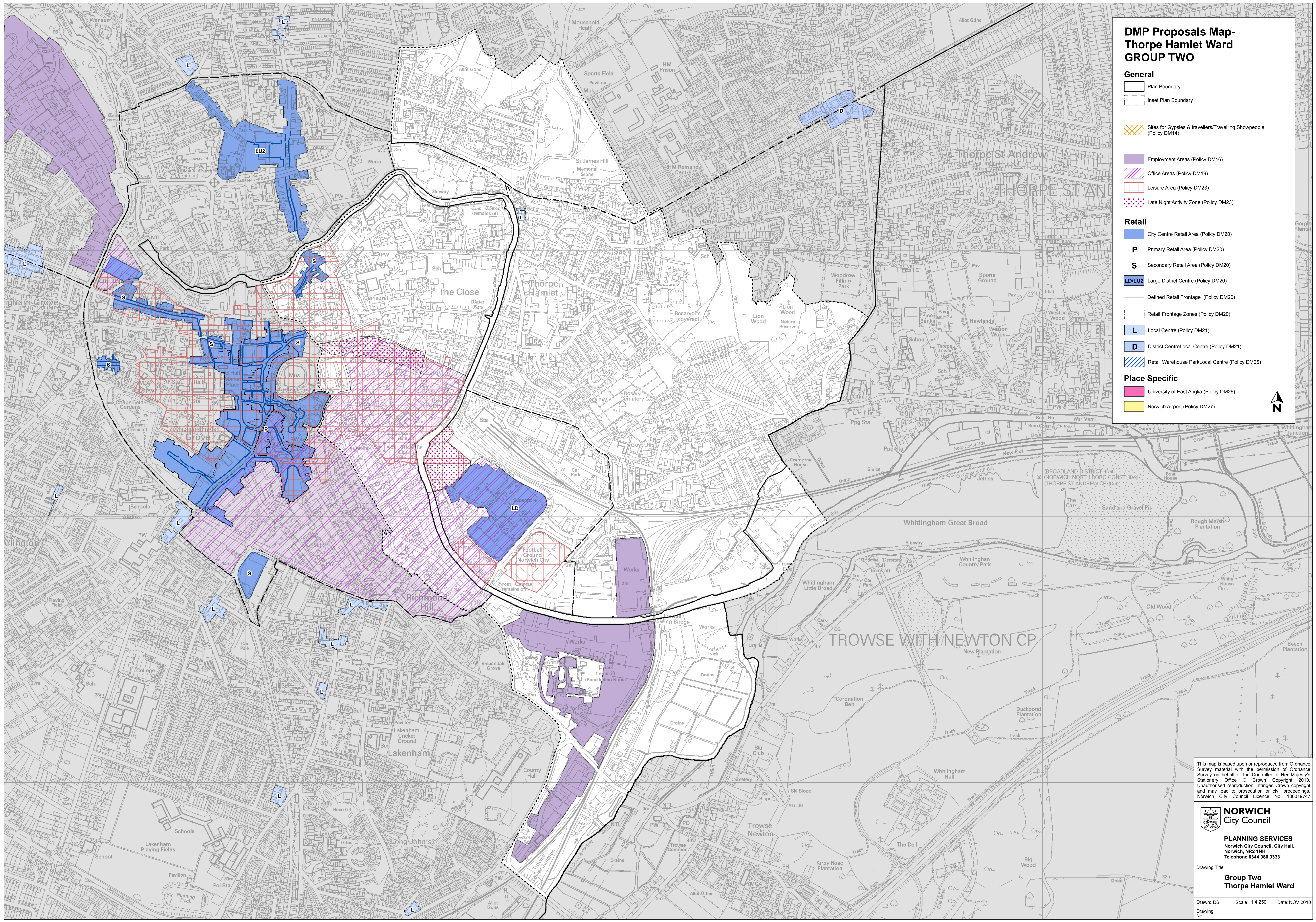
- Employment Areas (Policy DM16)
- Office Areas (Policy DM19)
- Leisure Area (Policy DM23)
- Late Night Activity Zone (Policy DM23)

Retail

- City Centre Retail Area (Policy DM20)
- P Primary Retail Area (Policy DM20)
- S Secondary Retail Area (Policy DM20)
- LD/LU2 Large District Centre (Policy DM20)
- Defined Retail Frontage (Policy DM20)
- Retail Frontage Zones (Policy DM20)
- L Local Centre (Policy DM21)
- D District Centre/Local Centre (Policy DM21)
- Retail Warehouse Park/Local Centre (Policy DM25)

Place Specific

- University of East Anglia (Policy DM26)
- Norwich Airport (Policy DM27)



This map is based upon or reproduced from Ordnance Survey material with the permission of Ordnance Survey on behalf of the Controller of Her Majesty's Stationery Office. © Crown Copyright 2010. Unauthorised reproduction infringes Crown copyright and may lead to prosecution or civil proceedings. Norwich City Council Licence No. 100019747

NORWICH
City Council

PLANNING SERVICES
Norwich City Council, City Hall,
Norwich, NR2 1NH
Telephone 0344 980 3333

Drawing Title
**Group Two
Thorpe Hamlet Ward**

Drawn: DB Scale: 1:4,250 Date: NOV 2010
Drawing No.