

DMP Proposals Map- Thorpe Hamlet Ward GROUP ONE

General

- Plan boundary
- Inset map boundary

Green Infrastructure

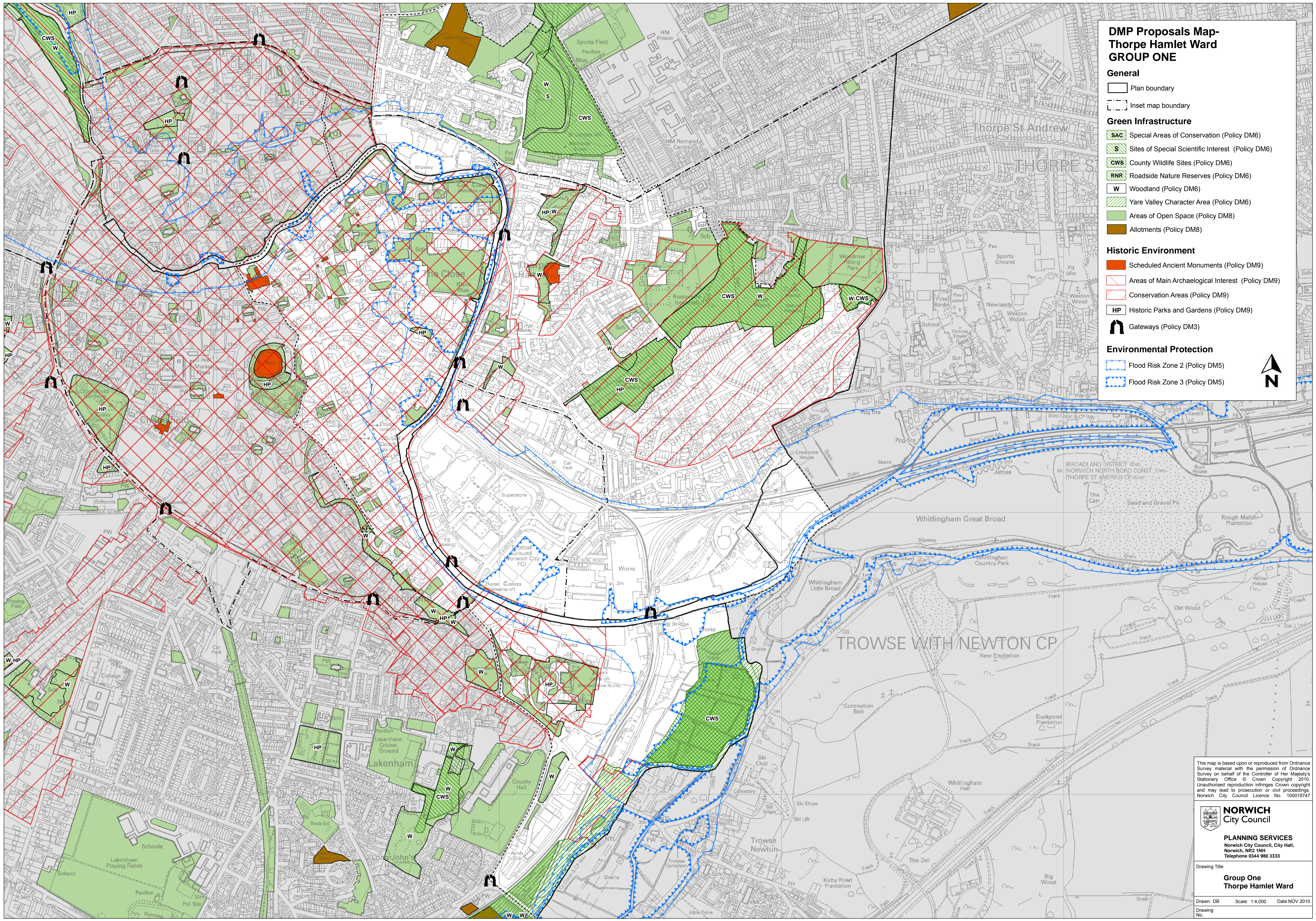
- SAC Special Areas of Conservation (Policy DM6)
- S Sites of Special Scientific Interest (Policy DM6)
- CWS County Wildlife Sites (Policy DM6)
- RNR Roadside Nature Reserves (Policy DM6)
- W Woodland (Policy DM6)
- Yare Valley Character Area (Policy DM6)
- Areas of Open Space (Policy DM8)
- Allotments (Policy DM8)

Historic Environment

- Scheduled Ancient Monuments (Policy DM9)
- Areas of Main Archaeological Interest (Policy DM9)
- Conservation Areas (Policy DM9)
- HP Historic Parks and Gardens (Policy DM9)
- Gateways (Policy DM3)

Environmental Protection

- Flood Risk Zone 2 (Policy DM5)
- Flood Risk Zone 3 (Policy DM5)



This map is based upon or reproduced from Ordnance Survey material with the permission of Ordnance Survey on behalf of the Controller of Her Majesty's Stationery Office © Crown Copyright 2010. Unauthorised reproduction infringes Crown copyright and may lead to prosecution or civil proceedings. Norwich City Council Licence No. 100019747

NORWICH
City Council

PLANNING SERVICES
Norwich City Council, City Hall,
Norwich, NR2 1NH
Telephone 0344 980 3333

Drawing Title
**Group One
Thorpe Hamlet Ward**

Drawn: DB Scale: 1:4,000 Date: NOV 2010
Drawing No.