

# DMP Proposals Map- Catton Grove Ward GROUP ONE

## General

- Plan boundary
- Inset map boundary

## Green Infrastructure

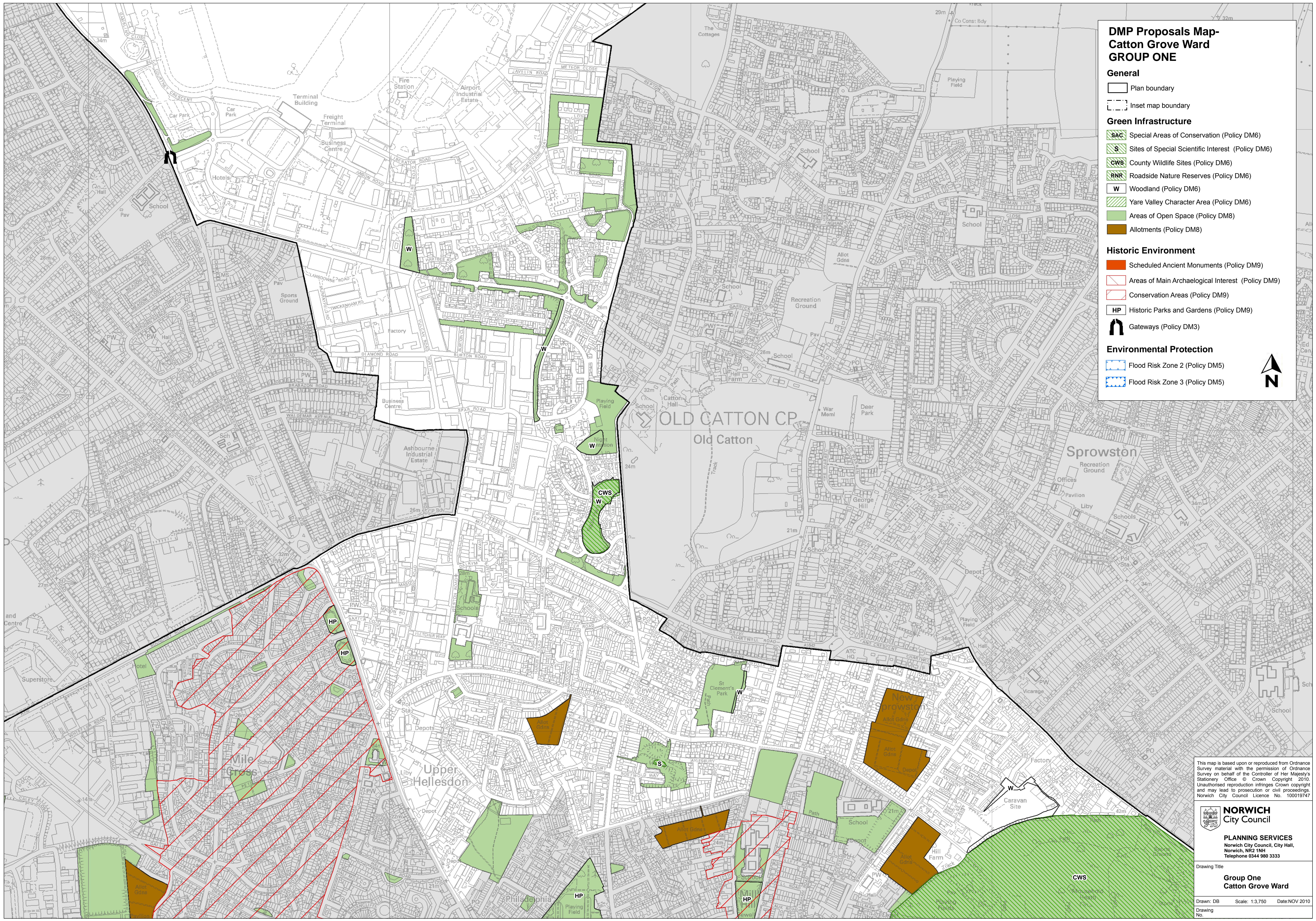
- SAC Special Areas of Conservation (Policy DM6)
- S Sites of Special Scientific Interest (Policy DM6)
- CWS County Wildlife Sites (Policy DM6)
- RNR Roadside Nature Reserves (Policy DM6)
- W Woodland (Policy DM6)
- Yare Valley Character Area (Policy DM6)
- Areas of Open Space (Policy DM8)
- Allotments (Policy DM8)

## Historic Environment

- Scheduled Ancient Monuments (Policy DM9)
- Areas of Main Archaeological Interest (Policy DM9)
- Conservation Areas (Policy DM9)
- HP Historic Parks and Gardens (Policy DM9)
- Gateways (Policy DM3)

## Environmental Protection

- Flood Risk Zone 2 (Policy DM5)
- Flood Risk Zone 3 (Policy DM5)



This map is based upon or reproduced from Ordnance Survey material with the permission of Ordnance Survey on behalf of the Controller of Her Majesty's Stationery Office © Crown Copyright 2010. Unauthorised reproduction infringes Crown copyright and may lead to prosecution or civil proceedings. Norwich City Council Licence No. 100019747

**NORWICH**  
City Council

**PLANNING SERVICES**  
Norwich City Council, City Hall,  
Norwich, NR2 1NH  
Telephone 0344 980 3333

Drawing Title  
**Group One  
Catton Grove Ward**

Drawn: DB Scale: 1:3,750 Date: NOV 2010  
Drawing No.