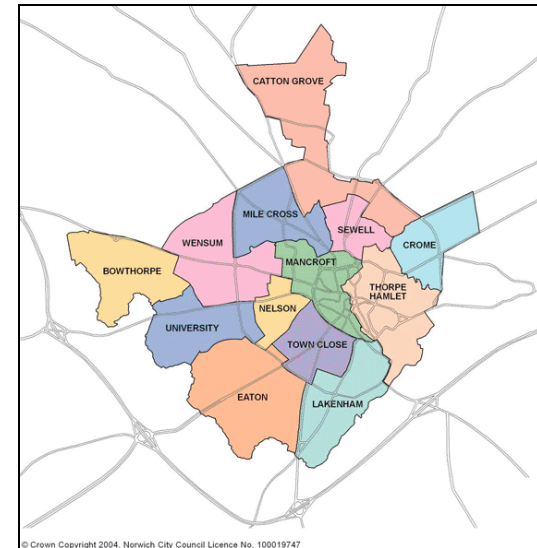


NORWICH OPEN SPACE NEEDS ASSESSMENT

PART 2

AREA PROFILES

SUB AREA 3 EAST

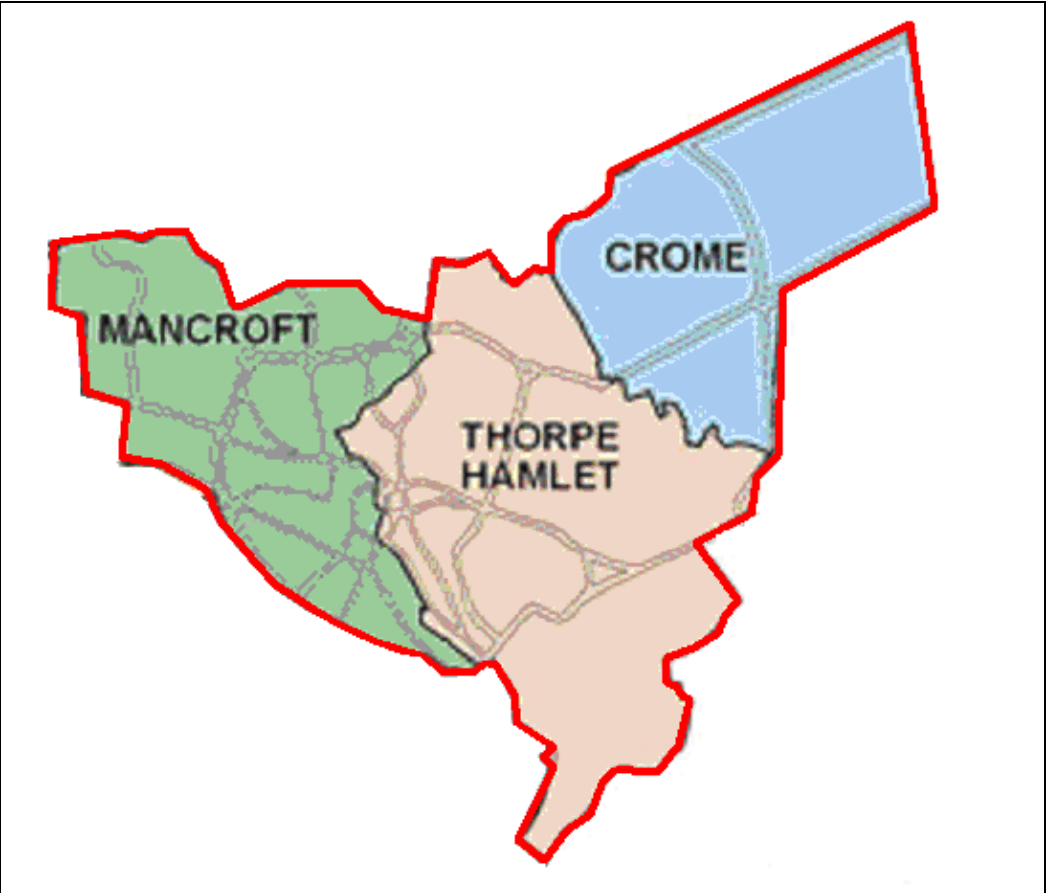


CONTENTS

Page (s)

1.0 Sub Area Map	2
2.0 Description of Sub Area	3
3.0 Quantity of provision	4 – 5
4.0 Access to facilities	6 – 7
5.0 Quality of facilities	8 – 9
6.0 Strategic Priorities	10
Appendices	

MAP OF SUB AREA



DESCRIPTION OF EAST SUB AREA

Location

The east sub area comprises the wards of Crome, Mancroft and Thorpe Hamlet. Crome includes the local authority area of Pilling Park, private housing abutting the prison and Mousehold Heath, and the Heartsease estate, which extends into and is surrounded on three sides by the suburban area of Broadland. Access into the wider countryside is relatively easy. Mancroft ward contains much of the medieval and historic city centre, as well as employment and retail areas and mixed uses extending north west along the River Wensum, and because of the built up nature of the ward, there is little open space. Thorpe Hamlet is a mixed ward with edge of city centre retail and employment areas, parts of the historic core of the city including the Cathedral Close, and mixed social, private and terraced housing to the north and east.

Population

The population of the wards in this sub area are as follows:

- Crome 10070
- Mancroft 9160
- Thorpe Hamlet 9060
- Total 28290

QUANTITY OF OPEN SPACE

In the east sub area, despite the largest number of open space sites in the city, there is a significant shortfall of open space to meet recommended minimum standards, most sites being quite small. If private sites are excluded, the shortfall is trebled. Given the built up nature of this sub area, this situation is unsurprising.

In terms of the individual typologies the following apply

- There are 7 sites classified as parks and gardens, though with the exception of Chapelfield Gardens and Woodrow Pilling Park, these are all relatively small. Provision of parks and gardens is only about 50% of the city average.
- Provision for natural and semi natural green space is only just adequate, but there is a shortfall of 12ha if private land is excluded. Green corridors mainly the Riverside Walk are linear in nature, and do not occupy much land.
- Informal amenity open space is again adequate in total, but deficient if private open space is excluded. About 4ha of the total of 38ha are church grounds, which make a disproportionate contribution to open space in this area, and a further 5ha is cemetery land or burial grounds.
- There is a small shortfall in play provision.
- Provision for allotments is deficient when judged against the recommended new minimum standard of provision, and there are only 2 allotment sites in the sub area, compared with the recommended new minimum standard.
- Outdoor sports facilities demonstrate a major shortfall in provision, especially if Mousehold pitch and putt and private facilities at the Prison (where by definition community access is not available), Carrow Park (where there is controlled community use) and Mount Zion Church are considered.
- There are 20 ha of school grounds where playing fields and other open space uses might be accommodated – indeed there is already some community use of some school pitches at weekends, albeit that this is not in secured community use.

EAST - Mancroft, Thorpe Hamlet & Crome, population 28,290	Number of sites	Existing quantity (ha)	Existing quantity (ha/1000)	Required quantity (ha)	Required quantity (ha/1000)	Balance (ha)	Balance (ha/1000)	Supply
Parks & Gardens	7	8.53	0.30	17.54	0.62	-9.01	-0.32	Shortfall
Natural/semi natural green space - total *	43	71.75	2.54	69.59	2.46	2.16	0.08	Adequate
Informal amenity open space - total **	111	37.94	1.34	28.29	1.00	9.65	0.34	Adequate
Play provision - total	31	3.88	0.14	5.09	0.18	-1.21	-0.04	Shortfall
Allotments	2	4.95	0.17	12.45	0.44	-7.50	-0.27	Shortfall
Outdoor sports facilities	8	17.67	0.62	28.57	1.01	-10.90	-0.39	Shortfall
TOTAL	202	144.72	5.12	161.54	5.71	-16.82	-0.59	Shortfall

* Natural/semi natural green space public

25 53.15

* Natural/semi natural green space private

6 14.37

* Green corridors

12 4.23

**Churchyards & cemeteries

36 8.99

**Informal amenity open space public

49 15.22

**Informal amenity open space private

26 13.73

School grounds

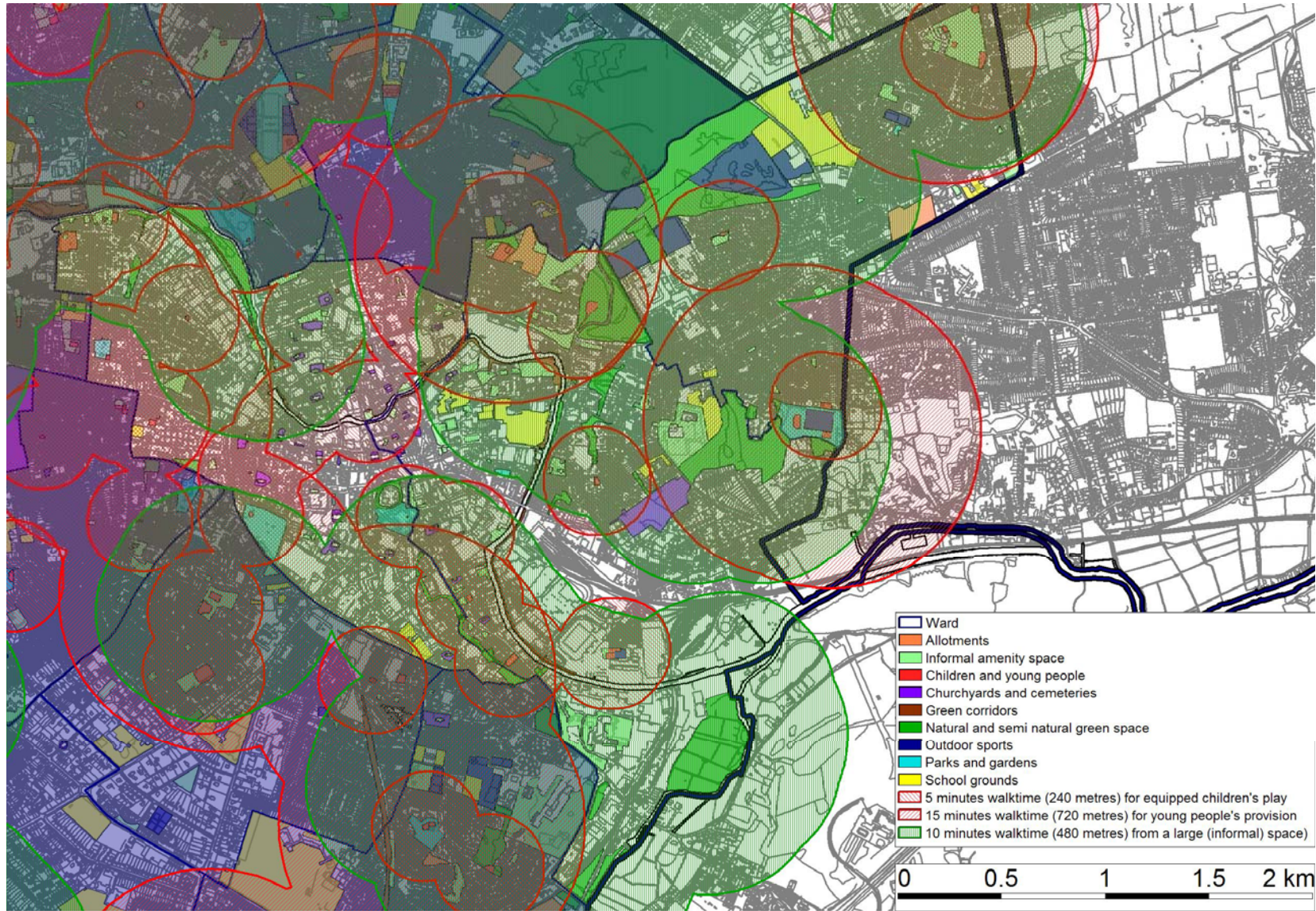
12 20.03

ACCESS TO OPEN SPACE

An assessment has been made of the accessibility of residents of this sub area to a range of local facilities, namely play and larger informal spaces (over 1 ha). Accessibility to other more strategic facilities is dealt with in Part 1.

In general, accessibility to these facilities is good though there are gaps (see accompanying map)

Need to expand



QUALITY OF OPEN SPACE

The overall quality of open space in the east sub area is better than the Norwich average. In particular:

- Parks and gardens are slightly below average, ranging from Castle Gardens and Green (84%) to Woodrow Pilling Park (56%)
- Natural and semi natural green space is slightly better than the average, although like all areas, it scores lower than other types of open space. The Yacht station is the best public natural green space, but there are poor sites at Carrow Bridge, St James Hollow and The Wilderness. Private green space is of a higher quality overall, with Gas Hill Wood the best site (79%) and Trowse Marshes the worst ((53%). The Riverside Walks green corridor is generally considered to be of a high quality, though there are variations between the Barn Road – Dolphin Bridge and Foundry Bridge- Bishops Bridge sections (which score 80%+) and the Duke Street – Coslany Street section (49%)
- Informal amenity open is generally better quality than the city average, though the presence of so many churchyards (with relatively good standards of upkeep and maintenance) does inflate the scores (75% overall for churches and cemeteries). Amenity open space in the public domain scores lowest (64%) and there are particularly poor sites at Lionwood Road, Wellington Green and Witard Road. Open space in private ownership is of a higher quality, and includes areas such as the Cathedral Close, Great Hospital and city centre areas where there are good standards of maintenance and de facto public access.
- Play provision in this sub area scores highest of all and exceeds the city average significantly. There are particularly good private facilities at Carrow Park, and local authority play areas such as St George's Street, Music House Lane, Dyers Yard and Marion Road.
- Allotments are above average quality, particularly Cottage Farm.
- The quality of outdoor sports facilities is poor compared with the city average, despite excellent private facilities at Carrow Park . None of the other sites is above average for the city, and Woodrow Pilling Park in particular scores lowly (56%). The quality of local authority changing rooms in this area is poor, and the Fountain Ground and Britannia Barracks require substantial improvement.

	Sub area average	Norwich average
Parks and gardens	69.2%	70.9%
Natural and semi natural green space	63.2%	61.1%
Informal amenity open space	71.5%	69.2%
Play provision for children and young people	80.1%	77.3%
Allotments	73.3%	68.3%
Outdoor sports facilities and 'recreation grounds'	68.7%	73.1%
Total	70.9%	68.6%

STRATEGIC PRIORITIES

- Because of the shortfall of open space in this sub area, particularly if private land is excluded, the priority should be to ensure that additional provision of open space in general is made in conjunction with new development. However, the difficulties of achieving this are not minimised by the densely built up nature of this part of Norwich, particularly in Mancroft and Thorpe Hamlet wards.
- Natural green space, informal amenity open space and outdoor sports areas should be retained as a general policy, though there may be small areas of open and green space which is in poor condition and of low public value which could be considered for disposal, in order to ensure protection and enhancement of open space elsewhere. It is unlikely that significant new areas of open space could be provided and every opportunity should be taken to secure public access to land in private or school ownership to minimise the shortfalls. In particular there are a number of school sites (especially the Heartsease schools but also those in Thorpe Hamlet) where pitches and other sports facilities could be brought into more secure community use. Sale Road/Heartsease Towers is a large area of informal open space, formerly used for sport, which could be converted in part or whole for this purpose again in the future, if the demand arises.
- The quality of open space in this area is generally good, but opportunities should be taken to make improvements to sites that have been identified in the database as poor. Similarly there are changing and other ancillary facilities at local authority sports grounds where investment in new and upgraded buildings would enhance the use of the site for sport.
- The rationalisation of schools in this area may leave areas of open space no longer required for their original school purpose, and alternative uses for another type of open space to benefit the community should be considered before any site is redeveloped. In particular the schools at Woodside and Wellesley have existing open space on site that could fulfil a wider community need.

DATABASE

Ha	URL	LOCATION	WARD	ZONE	CATEGORY	Quality %
2.82	CR08	COTTAGE FARM	Crome	5	Allotments	80.0
2.13	TH36	MOUSEHOLD SOUTH	Thorpe Hamlet	5	Allotments	66.6
4.95						73.3
0.20	CR35	WOODROW PILLING PARK	Crome	15	Children and YP BMX	77.7
0.12	TH09	CARROW PARK	Thorpe Hamlet	19	Children and YP MUGA	100.0
0.07	CR14	HEARTSEASE TOWERS	Crome	6	Children and YP MUGA	75.0
0.07	TH25	KETTS CAVE	Thorpe Hamlet	5	Children and YP MUGA	85.7
0.15	CR34	WOODROW PILLING PARK	Crome	15	Children and YP MUGA	72.7
0.05	CR15	HEARTSEASE TOWERS	Crome	6	Children and YP Skateboard	73.6
0.31	TH59	ST JAMES HOLLOW	Thorpe Hamlet	5	Children and YP Skateboard	69.5
0.99						79.2
0.21	TH79	ARGYLE STREET	Thorpe Hamlet	14	Children and YP Play	68.1
0.07	CR05	BORROWDALE DRIVE	Crome	5	Children and YP Play	87.2
0.09	TH12	CARROW PARK	Thorpe Hamlet	19	Children and YP Play	97.6
0.01	M12	CASTLE GREEN	Mancroft	14	Children and YP Play	76.2
0.04	M15	CHAPELFIELD GARDENS	Mancroft	14	Children and YP Play	82.5
0.01	M17	CHESTNUT COURT	Mancroft	14	Children and YP Play	87.0
0.11	M21	DOURO PLACE	Mancroft	10	Children and YP Play	65.9
0.02	M22	DYERS YARD	Mancroft	14	Children and YP Play	91.4
0.12	M23	EAGLE BATHS	Mancroft	9	Children and YP Play	62.7
0.02	M28	GILDENCROFT	Mancroft	11	Children and YP Play	90.6
0.10	CR16	HEARTSEASE 1	Crome	6	Children and YP Play	74.4
0.23	CR17	HEARTSEASE 2	Crome	6	Children and YP Play	70.5
0.03	M30	HEIGHAM STREET	Mancroft	9	Children and YP Play	86.0

0.57	TH27	KETTS CAVE	Thorpe Hamlet	5	Children and YP Play	78.4
0.03	M33	LEONARD STREET	Mancroft	9	Children and YP Play	76.7
0.09	TH34	MARION ROAD	Thorpe Hamlet	15	Children and YP Play	92.1
0.07	TH37	MUSIC HOUSE LANE	Thorpe Hamlet	14	Children and YP Play	97.8
0.74	M75	ST BARTHOLOMEW'S	Mancroft	9	Children and YP Play	62.8
0.04	TH64	ST PARMENTERGATE COURT	Thorpe Hamlet	14	Children and YP Play	74.5
0.02	M76	ST. GEORGES STREET	Mancroft	14	Children and YP Play	94.4
0.00	M78	ST. MARGARET'S CHURCH YARD	Mancroft	14	Children and YP Play	82.9
0.08	M79	ST. PAUL'S	Mancroft	11	Children and YP Play	79.5
0.04	M87	WESTEND STREET GARDENS	Mancroft	9	Children and YP Play	78.5
0.16	CR36	WOODROW PILLING PARK	Crome	15	Children and YP Play	70.5
2.89						80.3
0.09	M01	ALL SAINTS	Mancroft	14	Churchyards & cemeteries	84.1
0.36	M26	FRIENDS BURIAL GROUND	Mancroft	11	Churchyards & cemeteries	69.0
0.02	M32	JEWISH CEMETERY	Mancroft	11	Churchyards & cemeteries	69.0
0.06	M43	OLD MEETING HOUSE	Mancroft	14	Churchyards & cemeteries	80.6
0.07	M46	PUPPET THEATRE	Mancroft	14	Churchyards & cemeteries	81.6
0.03	M46A	PUPPET THEATRE	Mancroft	14	Churchyards & cemeteries	81.6
4.93	TH50	ROSARY	Thorpe Hamlet	15	Churchyards & cemeteries	78.3
0.07	M52	ST ANDREWS	Mancroft	14	Churchyards & cemeteries	70.3
0.29	M53	ST AUGUSTINE'S	Mancroft	11	Churchyards & cemeteries	84.1
0.17	M55	ST BENEDICTS (WELLINGTON GROVE)	Mancroft	14	Churchyards & cemeteries	60.7
0.07	M56	ST CLEMENTS	Mancroft	14	Churchyards & cemeteries	77.3
0.04	M57	ST EDMUNDS (FISHERGATE)	Mancroft	14	Churchyards & cemeteries	67.6
0.12	TH53	ST ETHELREDA'S	Thorpe Hamlet	14	Churchyards & cemeteries	65.0
0.12	TH54	ST GEORGE (TOMBLAND)	Thorpe Hamlet	14	Churchyards & cemeteries	81.8
0.07	M58	ST GEORGES (COLEGATE)	Mancroft	14	Churchyards & cemeteries	72.5
0.34	M60	ST GILES	Mancroft	14	Churchyards & cemeteries	93.0
0.06	M61	ST GREGORY'S	Mancroft	14	Churchyards & cemeteries	82.9

0.16	M62	ST JOHN DE SEPULCHRE	Mancroft	14	Churchyards & cemeteries	70.0
0.04	M63	ST JOHN MADDERMARKE	Mancroft	14	Churchyards & cemeteries	70.3
0.08	M64	ST JOHN THE BAPTIST	Mancroft	14	Churchyards & cemeteries	85.0
0.09	TH60	ST JULIAN'S	Thorpe Hamlet	14	Churchyards & cemeteries	86.7
0.03	M66	ST LAURENCE'S	Mancroft	14	Churchyards & cemeteries	60.0
0.10	M67	ST MARGARET'S	Mancroft	14	Churchyards & cemeteries	79.5
0.04	M67A	ST MARGARET'S	Mancroft	14	Churchyards & cemeteries	79.5
0.13	TH61	ST MARTIN AT PALACE PLAIN	Thorpe Hamlet	14	Churchyards & cemeteries	63.4
0.12	M68	ST MARTINS	Mancroft	14	Churchyards & cemeteries	59.1
0.19	M69	St Mary's	Mancroft	14	Churchyards & cemeteries	67.5
0.15	M70	ST MICHAEL AT COSLANY	Mancroft	14	Churchyards & cemeteries	72.7
0.07	TH63	ST MICHAEL AT PLEAS	Thorpe Hamlet	14	Churchyards & cemeteries	88.2
0.06	TH65	ST PETER HUNGATE	Thorpe Hamlet	14	Churchyards & cemeteries	75.6
0.17	M71	ST PETER MANCROFT	Mancroft	14	Churchyards & cemeteries	78.4
0.21	TH66	ST PETER PARMENTERGATE	Thorpe Hamlet	14	Churchyards & cemeteries	72.7
0.06	M72	ST SAVIOURS	Mancroft	14	Churchyards & cemeteries	64.9
0.05	TH67	ST SIMON & JUDE	Thorpe Hamlet	14	Churchyards & cemeteries	87.2
0.30	M73	ST STEPHENS	Mancroft	14	Churchyards & cemeteries	77.5
0.03	M74	ST SWITHIN'S	Mancroft	14	Churchyards & cemeteries	71.1
8.99						75.2
0.67	M36	MARRIOTS WAY A - BARN ROAD-DOLPHIN BRIDGE	Mancroft	11	Green corridors	81.5
0.90	TH42	RIVERSIDE WALK - BISHOPS BRIDGE - ST HELENS WHARF	Thorpe Hamlet	14	Green corridors	84.0
0.49	TH43	RIVERSIDE WALK - CARROW BRIDGE	Thorpe Hamlet	15/19	Green corridors	58.6
0.68	TH45	RIVERSIDE WALK - CARROW BRIDGE - FOUNDRY BRIDGE	Thorpe Hamlet	14	Green corridors	76.7
0.12	M47	RIVERSIDE WALK - COSLANY ST-NEW MILLS	Mancroft	14	Green corridors	57.1
0.05	M48	RIVERSIDE WALK - DUKE ST - COSLANY ST	Mancroft	14	Green corridors	48.7
0.29	TH46	RIVERSIDE WALK - FOUNDRY BRIDGE - BISHOPS BRIDGE	Thorpe Hamlet	14	Green corridors	80.0

0.24	TH46A	RIVERSIDE WALK - FOUNDRY BRIDGE - BISHOPS BRIDGE	Thorpe Hamlet	4	Green corridors	80.0
0.04	TH47	RIVERSIDE WALK - FYE BRIDGE ST - ST GEORGES ST	Thorpe Hamlet	14	Green corridors	61.5
0.25	M49	RIVERSIDE WALK - NEW MILLS - ST CRISPIN'S	Mancroft	14	Green corridors	71.7
0.34	TH48	RIVERSIDE WALK - ST HELENS WHARF - WHITEFRIARS	Thorpe Hamlet	14	Green corridors	75.5
0.16	TH49	RIVERSIDE WALK - WHITEFRIARS - FYE BRIDGE STREET	Thorpe Hamlet	14	Green corridors	64.5
4.23						70.0
0.26	TH01	ABBEY LANE	Thorpe Hamlet	14	Informal amenity open space NCC	50.0
0.09	TH02	ALL HALLOWS	Thorpe Hamlet	14	Informal amenity open space NCC	53.5
0.06	TH78	ARGYLE STREET	Thorpe Hamlet	14	Informal amenity open space NCC	58.3
0.40	M05	BAKERS ROAD	Mancroft	11	Informal amenity open space NCC	75.0
0.06	CR03	BARCLAY ROAD	Crome	6	Informal amenity open space NCC	60.7
0.07	M06	BARGATE COURT	Mancroft	11	Informal amenity open space NCC	57.1
0.17	M07	BARN ROAD 1	Mancroft	14	Informal amenity open space NCC	74.0
0.26	M08	BARN ROAD 2	Mancroft	9	Informal amenity open space NCC	66.6
0.10	TH03	BISHOPS GATE	Thorpe Hamlet	14	Informal amenity open space NCC	61.9
0.30	CR04	BORROWDALE DRIVE	Crome	5	Informal amenity open space NCC	57.1
0.35	TH04	CAMP GROVE	Thorpe Hamlet	15	Informal amenity open space NCC	68.7
1.02	TH05	CANNELL GREEN	Thorpe Hamlet	5	Informal amenity open space NCC	64.5
0.09	M16	CHARLTON COURT	Mancroft	11	Informal amenity open space NCC	67.8
0.05	M18	CITY HALL ST GILES	Mancroft	14	Informal amenity open space NCC	67.8
0.13	TH19	ELM HILL GARDENS	Thorpe Hamlet	14	Informal amenity open space NCC	69.5
0.23	M25	FISHERGATE OPEN SPACE	Mancroft	14	Informal amenity open space NCC	80.9
0.44	M29	GILDENCROFT PARK	Mancroft	11	Informal amenity open space NCC	63.0
4.16	CR13	HEARTSEASE TOWERS (SALE ROAD)	Crome	6	Informal amenity open space NCC	65.6
2.55	TH22	HEATHGATE	Thorpe Hamlet	5	Informal amenity open space NCC	70.9
0.03	TH23	HORSEFAIR	Thorpe Hamlet	14	Informal amenity open space NCC	60.7

0.12	TH26	KETTS CAVE	Thorpe Hamlet	5	Informal amenity open space NCC	53.3
0.04	M34	LEOPARD COURT	Mancroft	11	Informal amenity open space NCC	70.9
0.11	CR20	LIONWOOD ROAD	Crome	15	Informal amenity open space NCC	44.0
0.04	M35	MAGDALEN CLOSE	Mancroft	11	Informal amenity open space NCC	70.9
0.09	M35A	MAGDALEN CLOSE	Mancroft	11	Informal amenity open space NCC	70.9
0.25	TH35	MARKET AVENUE	Thorpe hamlet	14	Informal amenity open space NCC	71.4
0.62	M38	MIDLAND STREET OPEN SPACE	Mancroft	9	Informal amenity open space NCC	71.4
0.09	M39	MILE CROSS ROAD	Mancroft	9	Informal amenity open space NCC	67.7
0.08	CR21	MORSE ROAD	Crome	15	Informal amenity open space NCC	54.8
0.32	CR25	MUNNINGS ROAD	Crome	6	Informal amenity open space NCC	87.0
0.07	TH83	NORMANDIE TOWER	Thorpe Hamlet	14	Informal amenity open space NCC	64.2
0.14	M44	PARAGON PLACE	Mancroft	10	Informal amenity open space NCC	79.4
0.07	M45	PITT STREET OPEN SPACE	Mancroft	11	Informal amenity open space NCC	60.0
0.48	CR27	RIDER HAGGARD ROAD OPEN SPACE	Crome	6	Informal amenity open space NCC	71.0
0.10	TH51	SHERBOURNE PLACE	Thorpe Hamlet	14	Informal amenity open space NCC	57.1
0.08	M51	SILVER ROAD TOWER	Mancroft	11	Informal amenity open space NCC	52.3
0.05	CR28	SKELTON ROAD	Crome	6	Informal amenity open space NCC	69.6
0.25	TH52	SPITALFIELDS	Thorpe Hamlet	5	Informal amenity open space NCC	66.6
0.04	M54	ST BARTHOLOMEW'S	Mancroft	9	Informal amenity open space NCC	73.8
0.16	M59	ST GEORGES STREET OPEN SPACE	Mancroft	14	Informal amenity open space NCC	76.2
0.09	TH55	ST JAMES CLOSE 2	Thorpe Hamlet	5	Informal amenity open space NCC	65.2
0.18	TH56	ST JAMES CLOSE 3	Thorpe Hamlet	5	Informal amenity open space NCC	68.0
0.06	M77	ST. GREGORY'S ALLEY	Mancroft	14	Informal amenity open space NCC	57.1
0.05	M81	TALBOT SQUARE	Mancroft	11	Informal amenity open space NCC	61.2
0.05	M84	WELLINGTON GREEN	Mancroft	14	Informal amenity open space NCC	38.0
0.12	M88	Westwick Street	Mancroft	14	Informal amenity open space NCC	62.0
0.13	CR31	WITARD ROAD	Crome	6	Informal amenity open space NCC	48.0
0.06	CR32	WOMERSLEY ROAD	Crome	15	Informal amenity open space NCC	78.2
0.46	CR39	WOODSIDE ROAD	Crome	6	Informal amenity open space NCC	50.0
15.22						64.4

0.05	M04	ASSEMBLY ROOMS	Mancroft	14	Informal amenity open space private	86.4
0.01	M04A	ASSEMBLY ROOMS	Mancroft	15	Informal amenity open space private	86.4
2.35	TH06	CARROW ABBEY	Thorpe Hamlet	19	Informal amenity open space private	xxx
1.76	TH08	CARROW HOUSE	Thorpe Hamlet	19	Informal amenity open space private	93.7
0.10	TH11	CARROW PARK	Thorpe Hamlet	19	Informal amenity open space private	83.3
0.06	TH13	CATHEDRAL - ALMARY GREEN	Thorpe Hamlet	14	Informal amenity open space private	76.4
0.05	TH13A	CATHEDRAL - ALMARY GREEN	Thorpe Hamlet	14	Informal amenity open space private	76.4
0.25	TH14	CATHEDRAL - CLOISTERS	Thorpe Hamlet	14	Informal amenity open space private	62.5
0.13	TH15	CATHEDRAL - LIFES GREEN	Thorpe Hamlet	14	Informal amenity open space private	75.6
0.20	TH16	CATHEDRAL - LOWER CLOSE	Thorpe Hamlet	14	Informal amenity open space private	66.6
0.50	TH17	CATHEDRAL - UPPER CLOSE	Thorpe Hamlet	14	Informal amenity open space private	82.5
0.29	TH18	CROWN COURT (BISHOPGATE)	Thorpe Hamlet	14	Informal amenity open space private	69.0
0.06	M20	DOUGHTY'S HOSPITAL (GOLDEN DOG LANE)	Mancroft	14	Informal amenity open space private	71.7
0.51	M27	GIBRALTAR GARDENS	Mancroft	9	Informal amenity open space private	84.2
0.20	CR12	HEARTSEASE PH	Crome	15	Informal amenity open space private	60.5
0.29	TH38	NELSON HOTEL (MOUNTERGATE)	Thorpe Hamlet	14	Informal amenity open space private	86.9
0.15	M42	OLD LAUNDRY COURT (WATERWORKS ROAD)	Mancroft	9	Informal amenity open space private	80.0
0.04	TH85	ST ANDREWS HALL	Thorpe Hamlet	14	Informal amenity open space private	65.0
0.48	TH62	ST MATTHEWS	Thorpe Hamlet	15	Informal amenity open space private	86.4
0.18	TH68	THE GREAT HOSPITAL (BISHOPGATE)	Thorpe Hamlet	14	Informal amenity open space private	90.4
0.39	TH68A	THE GREAT HOSPITAL (BISHOPGATE)	Thorpe Hamlet	14	Informal amenity open space private	90.4
0.08	TH68B	THE GREAT HOSPITAL (BISHOPGATE)	Thorpe Hamlet	14	Informal amenity open space private	90.4
0.11	TH68C	THE GREAT HOSPITAL (BISHOPGATE)	Thorpe Hamlet	14	Informal amenity open space private	90.4
1.12	TH68D	THE GREAT HOSPITAL (BISHOPGATE)	Thorpe Hamlet	14	Informal amenity open space private	90.4
4.29	TH71	THORPE HAMLET RESERVOIR (TELEGRAPH LANE)	Thorpe Hamlet	15	Informal amenity open space private	86.6
0.08	M85	WEST END RETREAT PH (BROWNE ST)	Mancroft	9	Informal amenity open space private	64.7
13.73						79.9

1.90	CR07	BRITANNIA ROAD/MONS AVENUE	Crome	5	Natural and semi natural green space NCC	50.0
0.18	TH07	CARROW BRIDGE	Thorpe Hamlet	19	Natural and semi natural green space NCC	45.0
0.59	M13	CASTLE MOUND	Mancroft	14	Natural and semi natural green space NCC	56.6
0.56	M19	DOLPHIN GROVE	Mancroft	9	Natural and semi natural green space NCC	70.0
0.45	M24	EARLHAM ROAD WOODS	Mancroft	10	Natural and semi natural green space NCC	55.0
0.62	TH20	EUROPA WAY	Thorpe Hamlet	19	Natural and semi natural green space NCC	57.6
4.85	M31	HORSFORD ST/STATION WOOD	Mancroft	9	Natural and semi natural green space NCC	63.7
0.50	TH28	KETTS CAVE TREE BELT	Thorpe Hamlet	5	Natural and semi natural green space NCC	50.0
1.39	TH29	KETTS HEIGHT	Thorpe Hamlet	15	Natural and semi natural green space NCC	65.9
10.21	TH33	LION WOOD	Thorpe Hamlet	15	Natural and semi natural green space NCC	71.8
0.14	TH82	LIONWOOD	Thorpe Hamlet	15	Natural and semi natural green space NCC	71.8
0.28	TH81	LIONWOOD	Thorpe Hamlet	15	Natural and semi natural green space NCC	71.8
12.06	CR23	MOUSEHOLD HEATH	Crome/Cat G	5	Natural and semi natural green space NCC	66.7
0.24	TH40	OLD CROME WOOD	Thorpe Hamlet	15	Natural and semi natural green space NCC	60.0
0.03	TH41	PETCHES CORNER	Thorpe hamlet	14	Natural and semi natural green space NCC	64.5
0.16	M50A	ROUEN ROAD TREE BELT (THE RIDGE)	Mancroft	14	Natural and semi natural green space NCC	62.9
1.42	TH84	ROUEN ROAD TREE BELT (THE RIDGE)	Thorpe Hamlet	14	Natural and semi natural green space NCC	62.9
5.16	TH57	ST JAMES HILL	Thorpe Hamlet	5	Natural and semi natural green space NCC	xxx
2.98	TH58	ST JAMES HOLLOW	Thorpe Hamlet	5	Natural and semi natural green space NCC	50.0
0.59	M82	THE WILDERNESS	Mancroft	14	Natural and semi natural green space NCC	44.1
0.37	TH72	THORPE LIBRARY SITE	Thorpe Hamlet	15	Natural and semi natural green space NCC	76.5
1.10	TH73	TROWSE BY PASS	Lak/Th Ham	18/19	Natural and semi natural green space NCC	65.0
6.71	CR29	VALLEY DRIVE	Crome	5	Natural and semi natural green space NCC	56.7
0.13	M83	WATSON GROVE	Mancroft	9	Natural and semi natural green space NCC	60.0
0.52	TH77	YACHT STATION	Thorpe Hamlet	15	Natural and semi natural green space NCC	80.9
53.15						59.2
0.91	TH21	GAS HILL WOOD (GAS HILL)	Thorpe Hamlet	15	Natural and semi natural green space private	79.4
0.71	TH80	HOLMWOOD WOODS (HOLMWOOD CLOSE)	Thorpe Hamlet	15	Natural and semi natural green space private	70.0
11.18	TH75	TROWSE MARSHES	Thorpe hamlet	19	Natural and semi natural green space private	52.9

0.76	TH76	TROWSE MILL	Thorpe Hamlet	19	Natural and semi natural green space private	65.0
0.06	TH76A	TROWSE MILL	Thorpe Hamlet	19	Natural and semi natural green space private	65.0
0.76	TH76B	TROWSE MILL	Thorpe Hamlet	19	Natural and semi natural green space private	65.0
14.37						66.2
0.63	CR02	ALDERMAN WALKER	Crome	6	Outdoor Sport	62.7
2.18	CR06	BRITANNIA BARRACKS	Crome	5	Outdoor Sport	63.1
0.22	TH10	CARROW PARK	Thorpe Hamlet	19	Outdoor Sport	100.0
1.42	CR09	FOUNTAIN SPORTS GROUND	Crome	5	Outdoor Sport	66.7
1.35	CR22	MOUNT ZION CHURCH (HEARTSEASE LANE)	Crome	5	Outdoor Sport	61.2
8.53	CR24	MOUSEHOLD HEATH PITCH & PUTT	Crome	5	Outdoor Sport	71.4
2.12	CR26	NORWICH PRISON	Crome	5	Outdoor Sport	xxx
1.23	CR37	WOODROW PILLING PARK	Crome	15	Outdoor Sport	56.1
17.67						68.7
0.11	CR01	ALDERMAN WALKER	Crome	6	Parks and gardens	62.7
2.01	M11	CASTLE GARDENS/GREEN	Mancroft	14	Parks and Gardens	83.5
3.22	M14	CHAPELFIELD GARDENS	Mancroft	14	Parks and gardens	71.0
0.19	TH24	JAMES STUART GARDENS	Thorpe Hamlet	14	Parks and gardens	77.6
0.07	M37	MEMORIAL GARDENS	Mancroft	14	Parks and gardens	57.1
0.63	M86	WEST END STREET GARDENS	Mancroft	9	Parks and gardens	76.2
2.31	CR33	WOODROW PILLING PARK	Crome	15	Parks and gardens	56.1
8.53						69.2
1.92	CR10	HEARTSEASE FS & MS/PS	Crome		School grounds	
6.41	CR11	HEARTSEASE HS	Crome		School grounds	
2.00	CR11A	HEARTSEASE HS PLAYING FIELDS	Crome		School grounds	
3.52	TH39	NORWICH SCHOOL	Thorpe Hamlet		School grounds	
0.42	TH39A	NORWICH SCHOOL	Thorpe Hamlet		School grounds	
0.98	TH39B	NORWICH SCHOOL	Thorpe Hamlet		School grounds	

1.19	M41	NOTRE DAME HS	Mancroft		School grounds	
0.27	M65	ST JOHNS FS/IS	Mancroft		School grounds	
0.57	TH69	THORPE HAMLET FS/LIONWOOD IS	Thorpe Hamlet		School grounds	
1.82	TH70	THORPE HAMLET MS/LIONWOOD JS	Thorpe Hamlet		School grounds	
0.28	CR30	WELLESLEY FS	Crome		School grounds	
0.65	CR38	WOODSIDE FS	Crome	6	School grounds	