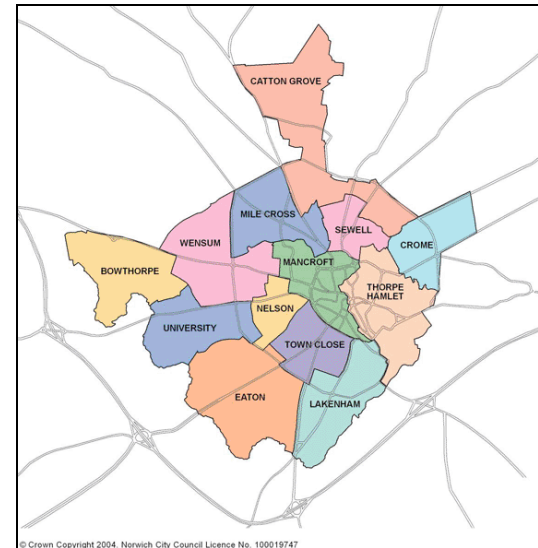


# NORWICH OPEN SPACE NEEDS ASSESSMENT

## PART 2

### AREA PROFILES

#### SUB AREA 2 NORTH

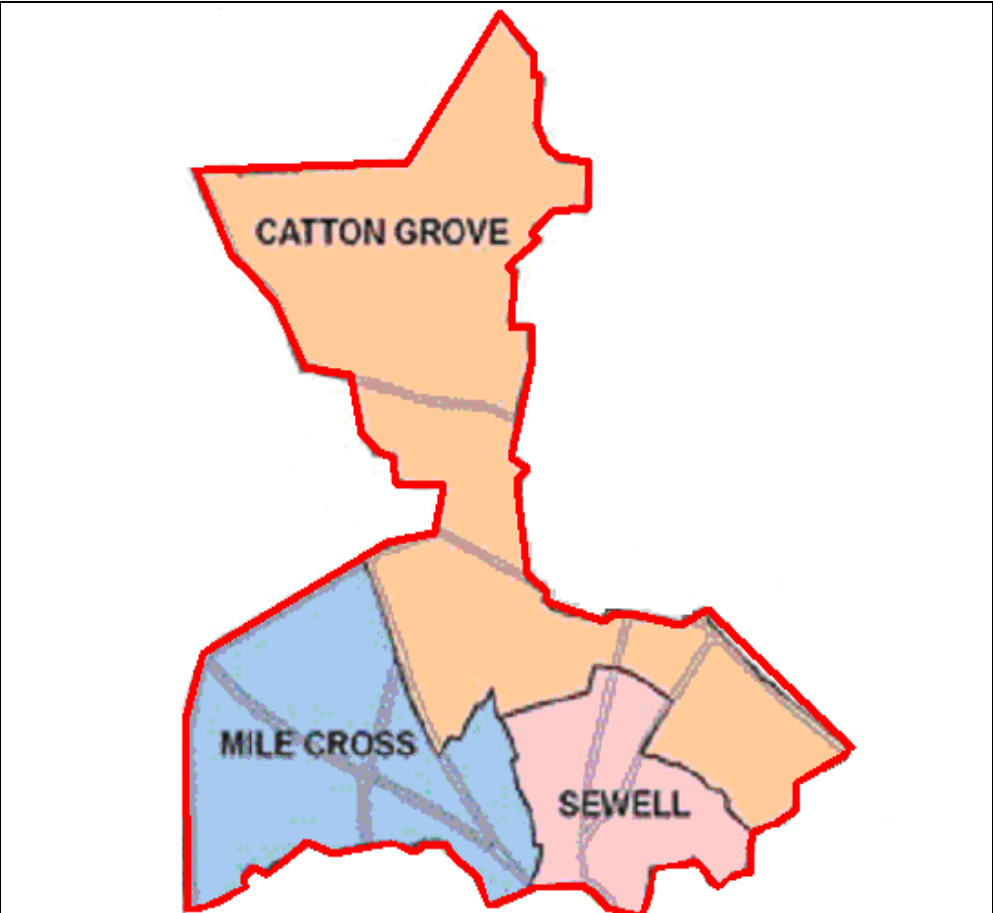


# CONTENTS

Page (s)

1.0 Sub Area Map	2
2.0 Description of Sub Area	3
3.0 Quantity of provision	4 – 5
4.0 Access to facilities	6 – 7
5.0 Quality of facilities	8 – 9
6.0 Strategic Priorities	10
Appendices	

# MAP OF SUB AREA



## DESCRIPTION OF NORTH SUB AREA

### Location

The north sub area comprises the wards of Catton Grove, Mile Cross and Sewell. Catton Grove includes Norwich airport and industrial and employment areas to the north, with newer housing off Fifers Lane, together with the Fiddlewood estate and areas of inter war and more recent housing in Upper Hellesdon and New Sprowston. The ward bounds the suburban parishes in neighbouring Broadland including Catton Park, and also includes much of Mousehold Heath. Mile Cross is a mixed ward north of the River Wensum, with extensive employment areas, the Mile Cross estate and Victorian and newer private housing adjacent to the city centre. Sewell is an area of predominantly high density Victorian terraced street north of the city centre, with very little open space but good access to Mousehold and Waterloo Park.

### Population

The population of the wards in this sub area are as follows:

- Catton Grove 10250
- Mile Cross 10570
- Sewell 10400
- Total 31220

## QUANTITY OF OPEN SPACE

Set against the minimum recommended standards of provision, there is an overall shortfall of open space in the north sub area of 21 ha, which increases to about 50ha if private open space and natural green space is excluded.

In terms of the individual typologies the following apply

- The provision for parks and gardens slightly exceeds the minimum recommended standard
- Provision for natural and semi natural green space is adequate, but there is a shortfall if private land is excluded. Much of this private land is not readily accessible to the community.
- There is a significant shortfall of about 10ha of informal amenity open space, which increases to 17ha if private land is excluded. Much of this 'private' land is incidental open space on former MOD land now developed for residential purposes and fulfilling a community need.
- Play provision is deficient, and only about three-quarters of the minimum recommended standard is met
- Provision for allotments is adequate compared with the recommended new minimum standard.
- There is a major deficiency of outdoor sports space, with only 5ha of current provision to meet a minimum recommended standard of over 31 ha. There are only 2 'public' sites used for sport in the sub area, and one private bowls green.
- School grounds occupy 12 ha and could be used to meet some of the shortfalls identified above, particularly for outdoor sport.

<b>NORTH - Catton Grove, Mile Cross &amp; Sewell, population 31,220</b>	<b>Number of sites</b>	<b>Existing quantity (ha)</b>	<b>Existing quantity (ha/1000)</b>	<b>Required quantity (ha)</b>	<b>Required quantity (ha/1000)</b>	<b>Balance (ha)</b>	<b>Balance (ha/1000)</b>	<b>Supply</b>
<b>Parks &amp; Gardens</b>	7	19.71	0.63	19.36	0.62	0.35	0.01	Adequate
<b>Natural/semi natural green space - total*</b>	29	93.69	3.00	76.80	2.46	16.89	0.54	Adequate
<b>Informal amenity open space - total**</b>	40	21.43	0.69	31.22	1.00	-9.79	-0.31	Shortfall
<b>Play provision - total</b>	23	3.53	0.11	5.62	0.18	-2.09	-0.07	Shortfall
<b>Allotments</b>	7	14.55	0.47	13.74	0.44	0.81	0.03	Adequate
<b>Outdoor sports facilities</b>	5	4.69	0.15	31.53	1.01	-26.84	-0.86	Shortfall
<b>TOTAL</b>	<b>111</b>	<b>157.60</b>	<b>5.05</b>	<b>178.27</b>	<b>5.71</b>	<b>-20.67</b>	<b>-0.66</b>	<b>Shortfall</b>

\* Natural/semi natural green space public 18 65.63

\* Natural/semi natural green space private 8 22.26

\* Green corridors 3 5.80

\*\*Churchyards & cemeteries 2 0.53

\*\*Informal amenity open space public 25 13.82

\*\*Informal amenity open space private 13 7.08

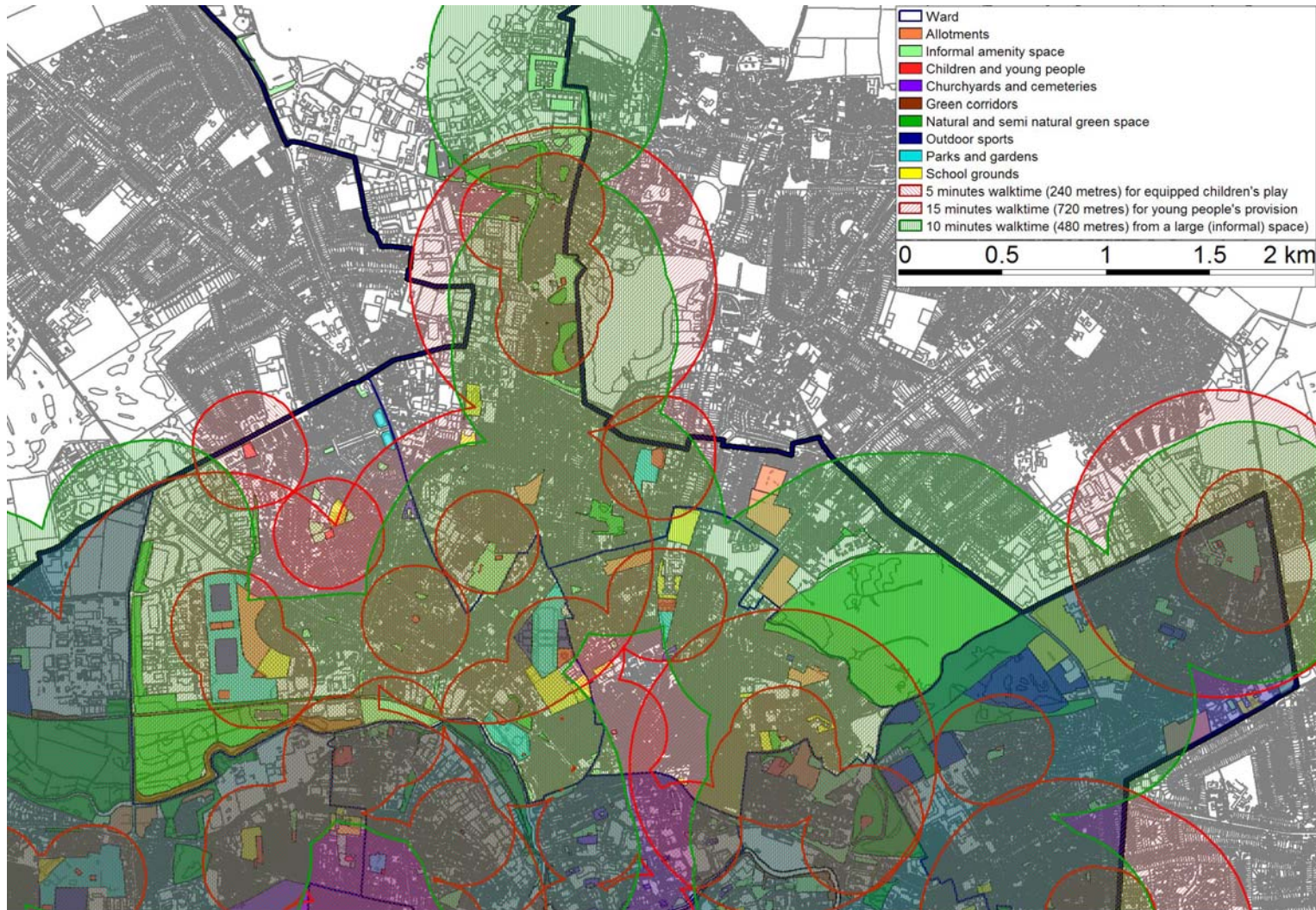
School grounds 13 11.84

## ACCESS TO OPEN SPACE

An assessment has been made of the accessibility of residents of this sub area to a range of local facilities, namely play and larger informal spaces (over 1 ha). Accessibility to other more strategic facilities is dealt with in Part 1.

In general, accessibility to these facilities is good though there are significant gaps (see accompanying map)

Need to expand





## QUALITY OF OPEN SPACE

The overall quality of open space in the north sub area is slightly lower than the Norwich average. In particular:

- Parks and gardens score about the same as the Norwich average, though there is a significant variation between the best (Waterloo Park 84%) and the poorest (St Clements Park 55%)
- Natural and semi natural green space is poorer than the average, and like all areas, scores lower than other types of open space. Mile Cross Marsh is considered to be the best natural green space in the public realm, with a variety of sites, including the Fifers Lane tree belt the poorest. Lime Kiln Mews, a small site on Dereham Road, is considered the best natural green space in private ownership, and Sweet Briar Road tree belt the poorest. Green corridors in this sub area are generally of high quality.
- Informal amenity open also scores lower than the city average, both public and private, and there is a variation between 79% and 44% in individual sites, most of which are smaller areas of open space in housing areas. The two churchyards in this sub area offer very little in terms of quality open space.
- Play provision is generally of a high quality, and about the city average. There are good teenagers' facilities in particular at Sloughbottom Park, and children's play areas in various locations (again including Sloughbottom). Facilities are identified as relatively poor at Bussey Road and Peterson Road.
- Allotments are generally of average quality, the best being at Mousehold North and Wall Road, the poorest at Catton Grove and Elm Grove Lane.
- The quality of outdoor sports facilities is good and above the city average, particularly at Waterloo Park and the private bowls green at Heath House PH. The ancillary and changing facilities at Sloughbottom Park rate rated very poor, with a quality score of 52%.

	Sub area average	Norwich average
Parks and gardens	70.1%	70.9%
Natural and semi natural green space	57.6%	61.1%
Informal amenity open space	66.1%	69.2%
Play provision for children and young people	77.5%	77.3%
Allotments	66.8%	68.3%
Outdoor sports facilities and 'recreation grounds'	76.4%	73.1%
Total	67.7%	68.6%

## STRATEGIC PRIORITIES

- There is an overall shortfall of open space in the north sub area of 20ha which increases to 50ha if private land is excluded. There are opportunities for access to open space in the neighbouring parishes in Broadland, but a priority in this sub area is to ensure that additional open space provision is made overall.
- There are particular deficiencies of informal open space, children's and teenagers' play and outdoor sports facilities. Additional play provision should be made in conjunction with any new development. As outdoor sport requires larger areas of land, full provision in accordance with the minimum recommended standard is unlikely to be achieved. A solution to this might be to accommodate additional pitches, courts and greens on existing sites where appropriate (there is space at both Waterloo Park and Sloughbottom Park for additional facilities), and to negotiate with schools to allow more community use of education facilities (e.g. Blythe Jex School)
- The quality of open space in this area is generally slightly below the city average, although it is good for outdoor sport and play. Future development should ensure that where appropriate qualitative improvements are made to existing areas of open space, in accordance with the deficiencies outlined in the attached database. In particular more intensive use could be made for outdoor sport of Sloughbottom Park if improvements are made to the old and sub standard changing facilities there, to ensure that these match the quality of the pitches, play and teen facilities already there, and any new ones that might be accommodated.
- The rationalisation of schools in this area may leave areas of open space no longer required for their original school purpose, and alternative uses for another type of open space to benefit the community should be considered before any site is redeveloped.
- While there is a shortage of open space in this area there may be circumstances where the disposal of areas of open space with poor quality and low value for the community might be redeveloped for other purposes where this might be of overall benefit to open space.

## DATABASE

Ha	URL	LOCATION	WARD	ZONE	CATEGORY	Quality %
1.49	CG02	BRICKFIELDS	Catton Grove	4	Allotments	66.6
1.16	CG05	CATTON GROVE	Catton Grove	4	Allotments	57.5
2.67	CG18	HILLFARM	Catton Grove	5	Allotments	69.4
2.98	CG36	WALL ROAD	Catton Grove	4	Allotments	74.0
3.55	MC43	VALPY AVENUE	Mile Cross	3	Allotments	66.6
1.54	S07	ELM GROVE LANE	Sewell	4	Allotments	59.2
1.15	S15	MOUSEHOLD NORTH	Sewell	5	Allotments	74.0
14.55						66.8
0.04	CG29	POINTERS FIELD	Catton Grove	4	Children and YP BMX	72.2
0.22	MC34	SLOUGHBOTTOM PARK	Mile Cross	3	Children and YP BMX	90.9
0.08	CG16	GREENFIELDS	Catton Grove	1	Children and YP MUGA	81.2
0.07	CG28	POINTERS FIELD	Catton Grove	4	Children and YP MUGA	81.2
0.18	MC33	SLOUGHBOTTOM PARK	Mile Cross	3	Children and YP MUGA	96.1
0.03	CG17	GREENFIELDS	Catton Grove	1	Children and YP Skateboard	78.2
0.63						83.3
0.01	CG04	BUSSEY ROAD	Catton Grove	4	Children and YP Play	53.5
0.02	CG14	GEORGE POPE ROAD	Catton Grove	4	Children and YP Play	70.2
0.01	CG20	IVES ROAD	Catton Grove	1	Children and YP Play	83.3
0.03	CG26	PENNYROYAL	Catton Grove	1	Children and YP Play	74.4
0.06	CG32	SPENCER ROAD (OFF FIFERS LANE)	Catton Grove	1	Children and YP Play	78.5
0.58	CG34	ST CLEMENTS PARK	Catton Grove	4	Children and YP Play	74.4
0.36	MC08	BOWERS AVENUE	Mile Cross	3	Children and YP Play	65.9
0.15	MC29	PETERSON ROAD	Mile Cross	3	Children and YP Play	55.4
0.10	MC30	SHORNCLIFFE AVENUE	Mile Cross	3	Children and YP Play	78.7

0.17	MC35	SLOUGHBOTTOM PARK	Mile Cross	3	Children and YP Play	93.0
0.14	MC36	SLOUGHBOTTOM PARK 2	Mile Cross	3	Children and YP Play	74.3
0.52	MC46	WATERLOO PARK	Mile Cross	4	Children and YP Play	88.2
0.13	MC48	WENSUM PARK 1	Mile Cross	11	Children and YP Play	84.3
0.02	MC49	WENSUM PARK 2	Mile Cross	11	Children and YP Play	71.8
0.05	S10	GERTRUDE ROAD	Sewell	5	Children and YP Play	74.4
0.04	S12	HEATH ROAD	Sewell	11	Children and YP Play	78.7
0.51	S17	SEWELL PARK	Sewell	4	Children and YP Play	82.9
2.90						75.4
0.30	MC38	ST CATHERINE'S (MILE CROSS RD)	Mile Cross	3	Churchyards & cemeteries	61.7
0.23	S03	CHRIST CHURCH (NEW CATTON)	Sewell	4	Churchyards & cemeteries	37.0
0.53						49.4
0.39	MC18	MARRIOTS WAY B DOLPHIN ST - MILE CROSS RD	Mile Cross	3	Green corridors	70.8
0.80	MC19	MARRIOTS WAY C - MILE CROSS RD - SWEET BRIAR RD	Mile Cross	3	Green corridors	81.4
4.60	MC50	WENSUM VALLEY WALK	Mile Cross	3	Green corridors	73.3
5.80						75.2
0.08	CG03	BULLARD ROAD	Catton Grove	4	Informal amenity open space NCC	78.5
2.88	CG15	GREENFIELDS	Catton Grove	1	Informal amenity open space NCC	58.0
0.08	CG19	IVES RD/BUSSEY RD	Catton Grove	1	Informal amenity open space NCC	76.6
3.30	CG27	POINTERS FIELD	Catton Grove	4	Informal amenity open space NCC	71.0
0.68	CG35	ST FAITHS ROAD SOUND BARRIER	Catton Grove		Informal amenity open space NCC	76.0
0.09	MC01	ALMA TERRACE	Mile Cross	4	Informal amenity open space NCC	60.7
3.36	MC02	ANDERSONS MEADOW	Mile Cross	3	Informal amenity open space NCC	68.8
0.18	MC05	BASSINGHAM ROAD	Mile Cross	3	Informal amenity open space NCC	61.9
0.14	MC06	BOLINGBROKE ROAD	Mile Cross	3	Informal amenity open space NCC	77.4
0.10	MC09	CIVIC GARDENS	Mile Cross	3	Informal amenity open space NCC	44.0

0.49	MC11	DOLPHIN PATH	Mile Cross	3	Informal amenity open space NCC	65.7
0.08	MC13	DRAYTON ROAD STEPS	Mile Cross	3	Informal amenity open space NCC	65.4
0.09	MC14	FENN CRESCENT	Mile Cross	3	Informal amenity open space NCC	65.3
0.11	MC15	HALF MILE ROAD	Mile Cross	3	Informal amenity open space NCC	71.4
0.04	MC16	HALF MILE ROAD/MILE CROSS ROAD	Mile Cross	3	Informal amenity open space NCC	68.5
0.15	MC27	PENN GROVE OPEN SPACE	Mile Cross	4	Informal amenity open space NCC	70.3
0.67	MC28	PETERSON ROAD	Mile Cross	3	Informal amenity open space NCC	62.2
0.26	MC39	ST MARTIN'S CLOSE OPEN SPACE	Mile Cross	11	Informal amenity open space NCC	77.4
0.18	MC41	TAILORS ROW	Mile Cross	3	Informal amenity open space NCC	57.1
0.19	MC42	THE NORMAN CENTRE	Mile Cross	3	Informal amenity open space NCC	82.3
0.14	MC51	WHEELER ROAD	Mile Cross	3	Informal amenity open space NCC	57.1
0.12	S04	COLIN'S COURT	Sewell	4	Informal amenity open space NCC	67.8
0.23	S09	GERTRUDE RD OPEN SPACE	Sewell	5	Informal amenity open space NCC	46.1
0.09	S18	SUN LANE	Sewell	4	Informal amenity open space NCC	76.9
0.11	S19	WATERLOO ROAD	Sewell	11	Informal amenity open space NCC	75.0
13.82						67.3
0.40	CG01	AIRPORT PARK & RIDE	Catton Grove	1	Informal amenity open space private	78.5
0.17	CG01A	AIRPORT PARK & RIDE	Catton Grove	1	Informal amenity open space private	78.6
0.30	CG01B	AIRPORT PARK & RIDE	Catton Grove	1	Informal amenity open space private	78.5
1.74	CG07	DOUGLAS CLOSE	Catton Grove	1	Informal amenity open space private	66.6
0.66	CG07A	DOUGLAS CLOSE	Catton Grove	1	Informal amenity open space private	66.6
0.87	CG07B	DOUGLAS CLOSE	Catton Grove	1	Informal amenity open space private	66.6
0.80	CG08	DOWDING ROAD	Catton Grove	1	Informal amenity open space private	60.7
0.18	CG09	EMBRY CLOSE	Catton Grove	1	Informal amenity open space private	57.1
0.57	CG22	MALLORY ROAD	Catton Grove	1	Informal amenity open space private	61.9
0.34	CG25	OULTON ROAD / BLICKLING RD (MOD)	Catton Grove	1	Informal amenity open space private	71.4
0.29	CG31	SPENCER ROAD (MOD)	Catton Grove	1	Informal amenity open space private	54.1
0.57	CG31A	SPENCER ROAD (MOD)	Catton Grove	1	Informal amenity open space private	54.1
0.19	MC07	BOUNDARY PH (AYLSHAM RD)	Mile Cross	3	Informal amenity open space private	68.5

7.08						66.4
1.53	CG11	FIDDLEWOOD WOODS	Catton Grove	1	Natural and semi natural green space NCC	60.0
0.80	CG12	FIFERSLANETREEBELT1,2,3"	Catton Grove	1	Natural and semi natural green space NCC	52.1
0.18	CG12A	FIFERSLANETREEBELT1,2,3"	Catton Grove	1	Natural and semi natural green space NCC	52.1
0.83	CG12B	FIFERSLANETREEBELT1,2,3"	Catton Grove	1	Natural and semi natural green space NCC	52.1
0.09	CG12C	FIFERSLANETREEBELT1,2,3"	Catton Grove	1	Natural and semi natural green space NCC	52.1
0.05	CG12D	FIFERSLANETREEBELT1,2,3"	Catton Grove	1	Natural and semi natural green space NCC	52.1
0.52	CG13	FIFERSLANETREEBELT5,6,7,8"	Catton Grove	1	Natural and semi natural green space NCC	60.0
0.22	CG13A	FIFERSLANETREEBELT5,6,7,8"	Catton Grove	1	Natural and semi natural green space NCC	60.0
0.97	CG13B	FIFERSLANETREEBELT5,6,7,8"	Catton Grove	1	Natural and semi natural green space NCC	60.0
0.26	CG13C	FIFERSLANETREEBELT5,6,7,8"	Catton Grove	1	Natural and semi natural green space NCC	60.0
0.72	CG21	IVES ROAD TREE BELT	Catton Grove	1	Natural and semi natural green space NCC	58.3
0.44	CG24	NIGHT PLANTATION	Catton Grove	1	Natural and semi natural green space NCC	50.0
49.94	CG23	MOUSEHOLD HEATH	Crome/Cat G	5	Natural and semi natural green space NCC	66.7
0.41	MC10	CLAPHAM WOODS	Mile Cross	3	Natural and semi natural green space NCC	63.3
0.08	MC12	DRAYTON ROAD GARAGE	Mile Cross	3	Natural and semi natural green space NCC	55.0
3.99	MC23	MILE CROSS MARSH	Mile Cross	3	Natural and semi natural green space NCC	76.6
1.24	MC24	MILE CROSS TRAVELLERS SITE	Mile Cross	3	Natural and semi natural green space NCC	55.0
3.37	MC37	SLOUGHBOTTOM PARK TREE BELT	Mile Cross	3	Natural and semi natural green space NCC	53.8
65.63						57.7
0.76	CG10	FAIRGROUND SITE	Catton Grove	5	Natural and semi natural green space private	65.2
1.70	CG30	ROSTWOLD WAY	Catton Grove	4	Natural and semi natural green space private	55.0
0.15	MC17	LIME KILN MEWS (DRAYTON RD)	Mile Cross	3	Natural and semi natural green space private	76.9
14.82	MC21	MILE CROSS GRAZING LAND	Mile Cross	3	Natural and semi natural green space private	65.0
0.73	MC22	MILE CROSS INDUSTRIAL ESTATE	Mile Cross	3	Natural and semi natural green space private	63.3
1.36	MC40	SWEET BRIAR ROAD TREE BELT (PRIVATE)	Mile Cross	3	Natural and semi natural green space private	47.0
2.36	MC40A	SWEET BRIAR ROAD TREE BELT (PRIVATE)	Mile Cross	3	Natural and semi natural green space private	47.0
0.38	S06	CROME ROAD (MOUSEHOLD AVENUE)	Sewell	5	Natural and semi natural green space private	60.8

22.26						60.0
1.72	MC32	SLOUGHBOTTOM PARK	Mile Cross	3	Outdoor Sport	64.5
1.17	MC32A	SLOUGHBOTTOM PARK	Mile Cross	3	Outdoor Sport	64.5
1.05	MC45	WATERLOO PARK	Mile Cross	4	Outdoor Sport	84.1
0.67	MC45A	WATERLOO PARK	Mile Cross	4	Outdoor Sport	84.1
0.07	S11	HEATH HOUSE PH	Sewell	5	Outdoor Sport	84.7
4.69						76.4
1.67	CG33	ST CLEMENTS PARK	Catton Grove	4	Parks and gardens	54.8
0.40	MC20	MILE CROSS GARDENS	Mile Cross	3	Parks and gardens	71.2
0.41	MC20A	MILE CROSS GARDENS	Mile Cross	3	Parks and gardens	71.2
8.63	MC31	SLOUGHBOTTOM PARK	Mile Cross	3	Parks and gardens	64.5
4.88	MC44	WATERLOO PARK	Mile Cross	4	Parks and gardens	84.1
2.96	MC47	WENSUM PARK	Mile Cross	11	Parks and gardens	71.1
0.78	S16	SEWELL PARK	Sewell	4	Parks and gardens	73.5
19.71						70.1
1.09	CG06	CATTON GROVE FS/MS/PS	Catton Grove		School grounds	
0.43	CG06A	CATTON GROVE FS/MS/PS	Catton Grove		School grounds	
0.90	MC03	ANGEL RD MS	Mile Cross		School grounds	
2.99	MC04	ANGEL RD FS/IS	Mile Cross		School grounds	
1.58	MC25	MILE CROSSMS/DOWSON FS	Mile Cross		School grounds	
0.81	MC26	NORMAN FS	Mile Cross		School grounds	
0.28	S01	ANGEL RD MS/JS	Sewell		School grounds	
2.00	S02	BLYTHE JEX HS	Sewell		School grounds	
0.73	S02A	BLYTHE JEX HS	Sewell		School grounds	
0.44	S05	CROME ROAD	Sewell		School grounds	
0.14	S08	GEORGE WHITE MS/JS	Sewell		School grounds	
0.09	S13	MAGDALEN GATES FS/IS	Sewell		School grounds	

0.38	S14	MOUSEHOLD FS/IS	Sewell		School grounds	
------	-----	-----------------	--------	--	----------------	--