



USEFUL CONTACTS

RSPCA – 0870 5555 999
www.rspca.org.uk

The Dogs Trust – 01953 498377
www.dogstrust.org.uk

Norwich City Council's Dog Wardens
can be contacted on 01603 212212
or by email info@norwich.gov.uk

For more information visit
www.norwich.gov.uk



NORWICH
City Council



Keep your dog healthy & happy

DON'T LET YOUR BEST FRIEND SUFFER...

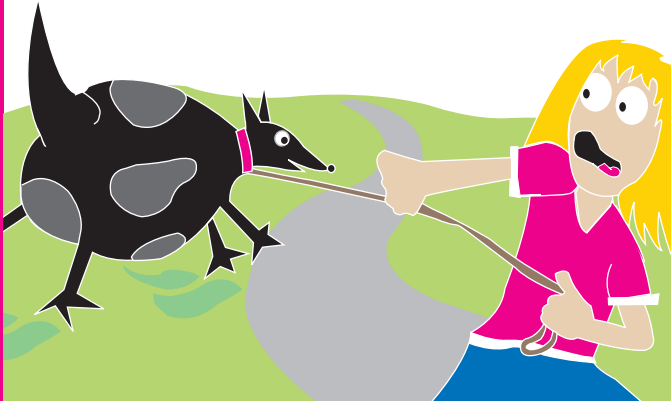


NORWICH
City Council

THERE ARE A NUMBER OF THINGS YOU CAN DO TO KEEP YOUR DOG HEALTHY AND HAPPY – AND TO PREVENT HIM CATCHING DISEASES. FOLLOW THE ADVICE IN THIS LEAFLET AND SPEAK TO YOUR VET TO MAKE SURE YOUR DOG LIVES A LONG AND HEALTHY LIFE...

TOP CANINE TIPS

- 1 When you get a new dog make sure you know what vaccinations it's had, and how healthy its parents are.
- 2 Register your dog with a local vets surgery as soon as possible – it will enable you to make appointments quickly when you need to.
- 3 Make sure your dog has its yearly booster vaccinations – these are crucial in preventing disease.
- 4 Make sure your pet is regularly treated against roundworm, tapeworm and fleas.
- 5 Make sure your dog gets enough exercise and the right type and amount of food – your dog's life will be shortened if it's over-fed and under-exercised. Your vet will be able to advise you on both.



ROUNDWORMS – it is important to make sure your dog is regularly treated against roundworms. Puppies should be wormed every two weeks from the time they are six weeks old until two clear consecutive stool samples have been produced – it should then be wormed every six months until it's three years old, and then annually. Roundworms are about 5-15cm long, pale white or beige and coiled like a spring – they may cause vomiting and diarrhoea in young animals but adults may show few symptoms.

TAPEWORMS – tapeworms in dogs are usually spread by fleas and lice. It's therefore important to regularly treat your dog for fleas – and to look out for evidence of tapeworms. The most common tapeworm produces small segments, about 7mm long, which are cream or white and can be seen around your pet's bottom or in the faeces. Symptoms of tapeworm are colic, chronic diarrhoea and weight loss. A vet will advise on the best procedure for treating tapeworm.

PARVOVIRUS – canine parvovirus is a highly contagious and serious disease. It is spread through dog faeces and can be transmitted from place to place by people as well as animals – for example on the bottom of shoes. Symptoms are lethargy, loss of appetite, fever, vomiting and severe, often bloody, diarrhoea. If your dog shows any of these symptoms you should contact your vet immediately – most deaths from parvovirus occur within 48 to 72 hours of the onset of any symptoms.

It is important that your dog is vaccinated against parvovirus – and that the vaccination is kept up-to-date with regular boosters. Puppies are particularly susceptible to this disease and should be vaccinated as soon as possible. It is best not to take your dog to public places (where it can come into contact with the virus) until it has had its full course of vaccinations.

Please note that there has been an outbreak of this virus in Norwich. A number of dogs have contracted and died from parvovirus. Make sure your dog is vaccinated.

